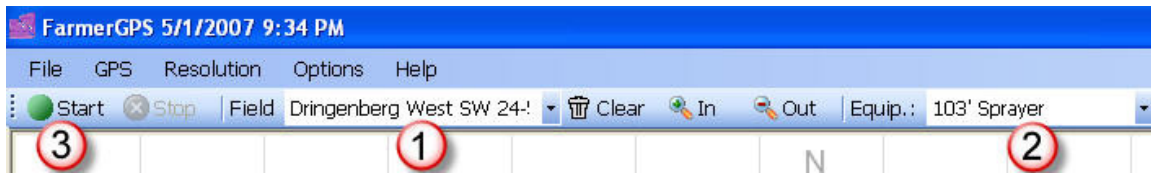


## FarmerGPS – Quick reference



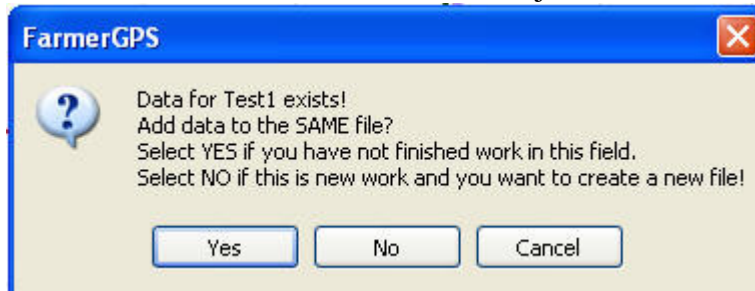
Please verify the following before every field operation:

1. Verify that the correct field is selected.  
If not, use the drop-down indicator on the right, to view the complete list and select the correct field. For new fields which are not entered yet, please use the menu Option/Setup and go to the fields tab.

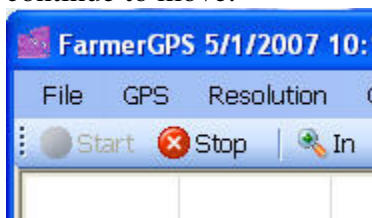


2. Verify that your current equipment is selected.
3. Use „**START**“ to record your work in a data file.

After you click START you may get the following message. Click YES only if you want to continue an unfinished operation, e.g. you left the field for a sprayer tank refill and come back to continue the job.

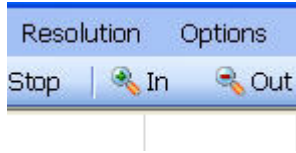


At the end of every operation, please click STOP. This will stop the recording of your data, however FarmerGPS will continue to show position updates as you continue to move.



## Frequently used functions:

Menu: **Resolution** and **In, Out** allow you to change the resolution of the birds-eye view. The keys “O” and “I” will also work for a quick Zoom-in or Zoom-out.

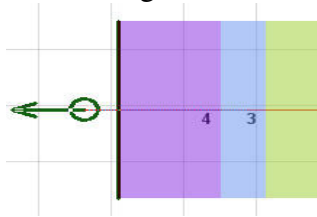


**Function keys F5 and F6:** Mark a spot. This could be a rock, a weed patch or anything else you may need to mark.

**Function keys F9 and F10:** Create a straight south-north or east-west guideline. Often used to split a field using a perfect straight line without the need to create an A-point and a B-point.

**Function key F11:** Toggles the resolution between your current setting and 200m/sq. This is meant to provide a one-click overview of the field. Clicking F11 again will go back to the previous resolution.

**Keys Q,W,E and R:** Allow you to toggle the current drawing color (often used to mark changes in fertilizer rates, seeding rates etc.)



**Function key F2:** If you do not use an integration box, F2 allows the manual ON/OFF toggling of your equipment.